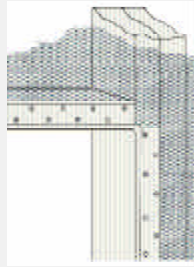
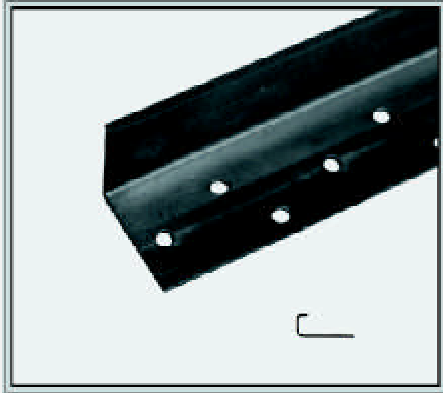


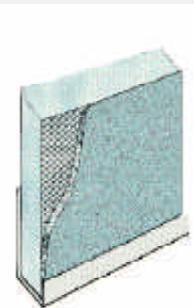
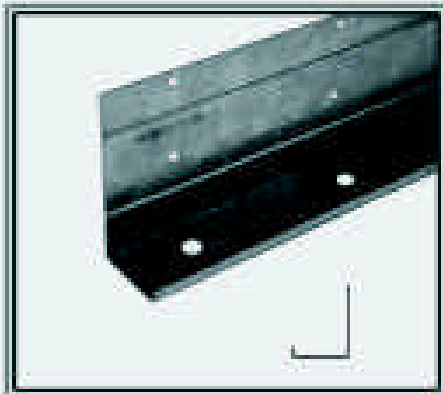
# Accessories



## N-66 CASING BEAD (NARROW WING CASING BEAD)

This product has the same basic profile as the X-66, but without the expanded flange. Nail and keying holes are provided in the flange, which is approximately one inch wide. Available in galvanized steel and zinc alloy, 10 ft. lengths, 30 pcs., 300 feet per carton. This product is manufactured in Fontana, CA, but available by special order throughout the AMICO system.

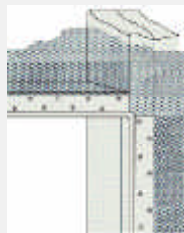
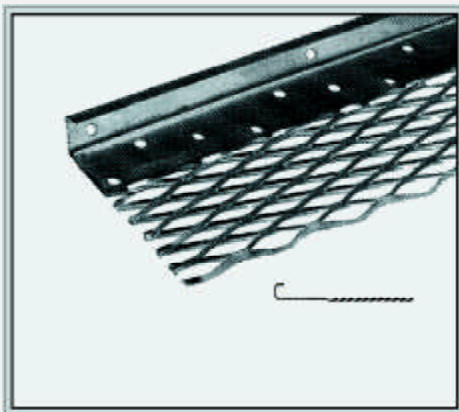
Grounds	Galvanized Weight per 1000 Lineal Ft.	Zinc Weight per 1000 Lineal Ft.
3/8"	123 Lbs.	117 Lbs.
1/2"	130 Lbs.	125 Lbs.
3/4"	147 Lbs.	138 Lbs.
7/8"	155 Lbs.	148 Lbs.
1"	185 Lbs.	179 Lbs.
1 1/4"	216 Lbs.	194 Lbs.



## "J" METAL 3/8" to 1 3/8" GROUNDS

AMICO square nosed casing is provided in 1-3/8" to accommodate 1" of rigid insulation and 3/8" of one-coat stucco with weep holes in the ground flange located under the rigid insulation. This casing or plaster stop now includes one-coat casing beads (See Below) for use with approved one-coat systems that require this type of bead at the base of the wall. Nailing flange width is 3 1/2 inches. **This should not be considered a true foundation weep screed for three-coat stucco applications.** "J" metal is manufactured only at AMICO Fontana in California.

Grounds	Gage	Nailing Flange Width	Bundles per Pallet	Weight
3/8"	26	3 1/2"	100	260
1/2"	26	3 1/2"	100	275
1-3/8"	26	1-7/8"	100	206
* 1-3/8"	28	3-1/2"	50	255
1-3/8"	26	3-1/2"	50	327



## ONE COAT CASING BEAD

3/8" and 1/2" X-66 Casing Bead has holes in the ground flange for use with some one-coat systems that have been tested and received approval reports for their use at the bottom of the wall. The expanded mesh flange is 3 inches wide. **Casing beads with holes punched in the ground flange, should not be considered to be foundation weep screeds for traditional three-coat stucco installations.**

Grounds	Galvanized Weight per 1000 Lineal Feet	Zinc Weight per 1000 Lineal Feet
3/8"	147 Lbs.	140 Lbs.
1/2"	155 Lbs.	148 Lbs.

Caulk all joints

\* The Uniform Building Code requires that all weep screeds have a 3/2" nailing flange with holes, manufactured from minimum 26-gage steel. Additional sizes and gages are offered for non-code work. AMICO recommends the use of zinc or vinyl beads for all exterior applications.