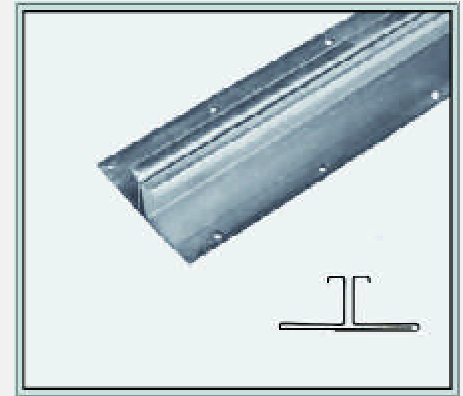
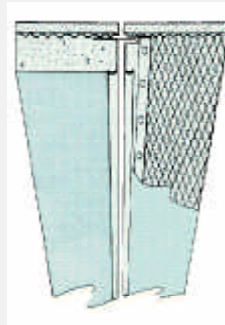


Expansion / Control Joint

2-PIECE EXPANSION JOINT (NUMBER 40 TYPE)

AMICO's 2- piece, male/female, expansion joint is used to accommodate movement in two directions. Used at through wall expansions with double studs or where there is a transition from one type of framing to another such as CMU's to wood framing. Joint opening is adjustable from 1/4" to 5/8". Available in 10 ft. lengths, 15 pieces, 150 feet per carton.

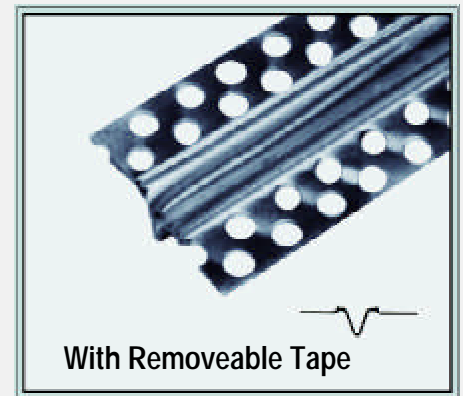
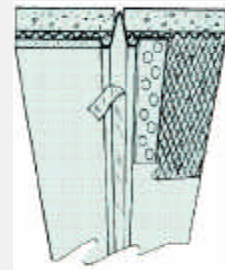
Grounds	Galvanized Weight per 1000 Lineal Ft.	Zinc Weight per 1000 Lineal Ft.
1/2"	378 Lbs.	352 Lbs.
3/4"	408 Lbs.	380 Lbs.
7/8"	423 Lbs.	394 Lbs.



AMICO N093 DRYWALL CONTROL JOINT

Similar to control joint but used for veneer finish drywall installations. Mainly used from floor to ceiling in long partition runs and from header to ceiling above doorframes. Available in zinc alloy only, and is packed in 10 ft. lengths, 25 pcs., 250 feet per carton.

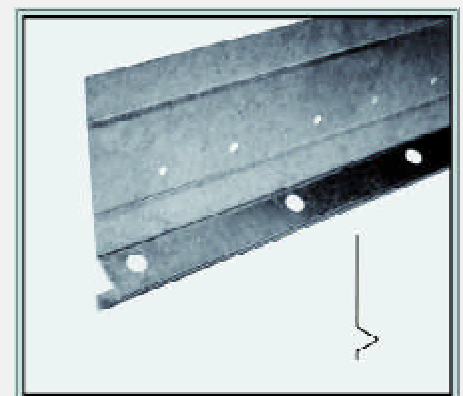
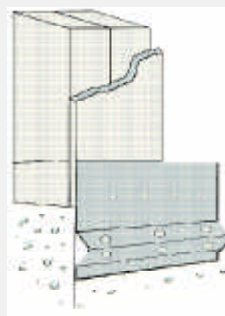
Product	Ground	Zinc Weight per 1000 Lineal Ft.
N 093	3/32"	108 Lbs.



FOUNDATION WEEP SCREED (NO. 7)

ASTM C1063 and most building codes require this bead on all framed walls as part of a drainage system for exterior stucco applications. The 3 1/2 inch nailing flange serves as a flashing when water resistant breathable building paper or paper backed lath is installed over the flange. The holes in the "V" stop act primarily as a keying mechanisms and also offer minor moisture weeping capabilities. As stucco cures it will shrink slightly away from the "V" stop allowing moisture to flow down the building paper and exit down the sloped surface. Available in 10 ft. lengths in galvanized steel and zinc alloy by special request. Packaged 10 pcs. per bundle, 100 bundles per pallet.

Grounds	Gage	Nailing Flange Width	Weight per 1000 Lineal Ft.
1/2"	26	3 1/2"	323 Lbs.
5/8"	26	3 1/2"	339 Lbs.
* 7/8"	28	3"	249 Lbs.
* 7/8"	28	3 1/2"	280 Lbs.
7/8"	26	3 1/2"	365 Lbs.
* 1-3/8"	28	3 1/2"	309 Lbs.
1-3/8"	26	3 1/2"	409 Lbs.



* The Uniform Building Code requires that all weep screeds have a 3 1/2" nailing flange with holes, manufactured from minimum 26-gage steel. Additional sizes and gages are offered for non-code work. Flashing should be applied in the form of asphalt-saturated construction paper or flashing strips behind all expansion joints and all joints should be imbedded in caulk. AMICO recommends the use of galvanized lath and either zinc alloy or vinyl accessories for all exterior stucco applications.