

Stainless Steel Bead Accessories for Stucco and Plaster Installations

Project Submittals as manufactured by
ALABAMA METAL INDUSTRIES CORPORATION

Submittal Date:

Contract Number:

Project Name:

Section Number:

Contractor's Name:

All information contained herein is accurate as known at the time of publication. Specifications may change and AMICO reserves the right to change product specifications without notice and without incurring obligations.

ALABAMA METAL INDUSTRIES CORPORATION

3245 Fayette Avenue ♦ Birmingham, AL 35208 ♦ Telephone 800/366-2642 ♦ Facsimile 205/786-6527
email fmayer@gibraltar1.com



Lathing Accessories

for stainless steel meeting ASTM C1063

SCOPE

This submittal covers lathing accessories installed with interior and exterior Portland Cement-Based Plaster. All accessories shall have perforated or expanded flanges to permit complete embedment in the plaster, to provide for accurate alignment, and to secure attachment of the accessory to the underlying surface in receiving the specified thickness of plaster. The selection of the accessory shall be determined by numerous factors not limited to: the project location, climate and environment resulting from excessive salt, moisture, humidity, pollution, wear and temperature changes.

TYPES OF ACCESSORIES

This submittal includes the following types of accessories used for plaster and stucco installations: corner beads, casing beads, expansion joints, control joints, weep screeds, reveals, soffit vents and miscellaneous components. Not all accessories are made in all materials.

MATERIALS

¹ Stainless Steel Grade 304

THICKNESS OF BASE MATERIALS

These minimum thicknesses meet both ASTM C841 and ASTM C1063.

Stainless Steel: 0.0172 inch

FINISH

Stainless Steel shall be mill finish

¹ Stainless Steel is not currently acknowledged by ASTM as a lathing or lathing accessory material.

PACKAGING AND PACKAGE MARKING

Generally available in 10-ft long lengths. Longest possible lengths shall always be installed to avoid joints. Each factory box shall be marked with manufacturer's name, and style of lathing accessory.

CERTIFICATION

When required a certification that products meets the requirements of ASTM C1063 and ASTM C841 shall be provided.

REFERENCES

AMICO LATH AND STUCCO ACCESSORIES MEETS THE FOLLOWING SPECIFICATIONS

ASTM A240 Standard Specification for Chromium and Chromium-Nickel Stainless Steel Plate, Sheet, and Strip for Pressure Vessels and for General Applications

ASTM C841 Standard Specification for Installation of Interior Lathing and Furring

ASTM C1063 Standard Specification for Installation of Lathing and Furring to Receive Interior and Exterior Portland Cement-Based Plaster

Code Acceptance

Meets Buy American Procurement Requirements.

Made in the United States of America

LEED: 70 - 80% post industrial recyclable content

All information contained herein is accurate as known at the time of publication. Specifications may change and AMICO reserves the right to change product specifications without notice and without incurring obligations.

ALABAMA METAL INDUSTRIES CORPORATION

3245 Fayette Avenue ♦ Birmingham, AL 35208 ♦ Telephone 800/366-2642 ♦ Facsimile 205/786-6527
email fmayer@gibraltar1.com

2012



X-1 CORNER BEAD Stainless Steel Grade 304 3" Expanded Metal Flanges

FOR STUCCO AND PLASTER INSTALLATIONS.
This is the standard metal accessory for providing exterior corner protection from bumping and providing a reliably straight ground for screeding. The 3" expanded mesh wings are easily flexed to adapt to framing irregularities and to match appropriate screed heights.

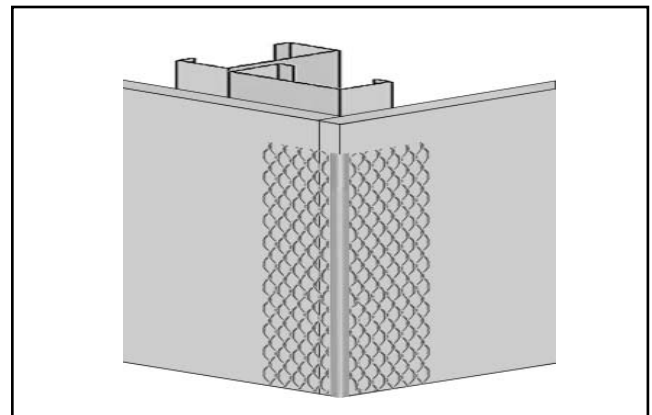
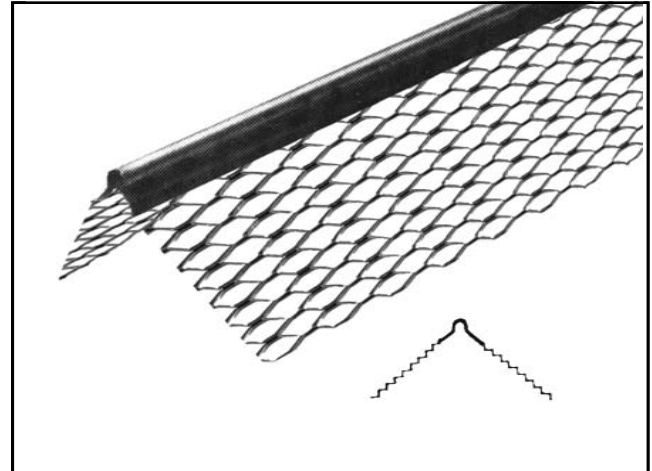
Submitted Product	Product Number	Product Dimensions
	X-1	3" x 3"
Standard Package Lengths are 10-ft.		

Description

Corner Bead is an external corner reinforcement accessory made by expanding metal and bent to reinforce portland cement stucco at external corners and to also establish grounds. X-1 Corner Beads for outside corners have a smooth round nose bead with Diamond Mesh wings for the keying of plaster right up to the nose of the bead.

Especially recommended in fireproofing columns and beams. Rigid straight edge nose is easy to install and permits plumb straight outside corners. Excellent protection for corridor corners exposed to traffic. Sections can be joined or spliced together by inserting a finishing nail or a piece of hangar wire.

Stainless steel lath and accessories can be used with various substrates: sheathing, CMU, cast-in-place
Longer life than Galvanized Steel and Zinc Alloy –
Maximum Corrosion Protection



Refer to ASTM C1063 for support spacing, lath selection, fastener selection and further information regarding the proper installation of metal lath.

ASTM and most codes require hot dipped galvanized lath for all exterior applications. Stainless steel lath and accessories provides longer life and more resistance to corrosive environments.

Made in the United States of America

All information contained herein is accurate as known at the time of publication. Specifications may change and AMICO reserves the right to change product specifications without notice and without incurring obligations.

ALABAMA METAL INDUSTRIES CORPORATION

3245 Fayette Avenue ♦ Birmingham, AL 35208 ♦ Telephone 800/366-2642 ♦ Facsimile 205/786-6527
email fmayer@gibraltar1.com

2012



X-66 CASING BEAD Stainless Steel Grade 304 Expanded Metal Plaster Stop

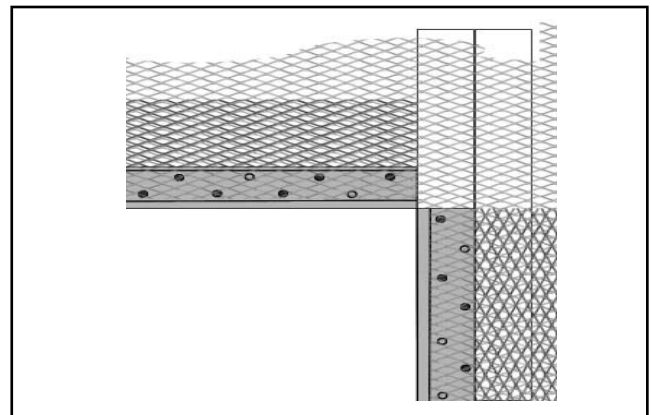
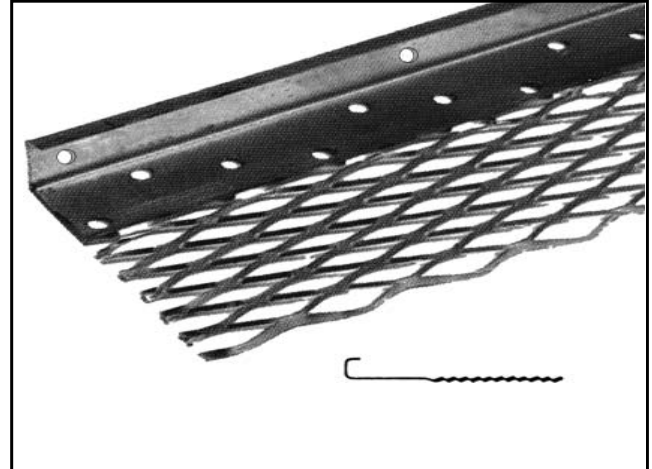
FOR STUCCO AND PLASTER INSTALLATIONS
Casing Bead is used to terminate plaster or stucco around doors, windows and any other through wall penetration. Select the proper ground to aid in screeding the proper thickness of stucco.

Product Submittal	Product Number	Ground
	X-66	¾"
additional Grounds available upon request		
Standard Package Length is 10-ft.		

DESCRIPTION

One piece casing bead with a 3-inch wide expanded metal mesh flange. Pre-drilled for proper attachment to wood and metal framing members.

Stainless steel lath and accessories can be used with various substrates: sheathing, CMU, cast-in-place
Longer life than Galvanized Steel and Zinc Alloy –
Maximum Corrosion Protection



Refer to ASTM C1063 for support spacing, lath selection, fastener selection and further information regarding the proper installation of metal lath.

ASTM and most codes require hot dipped galvanized lath for all exterior applications. Stainless steel lath and accessories provides longer life and more resistance to corrosive environments.

Made in the United States of America

All information contained herein is accurate as known at the time of publication. Specifications may change and AMICO reserves the right to change product specifications without notice and without incurring obligations.

ALABAMA METAL INDUSTRIES CORPORATION

3245 Fayette Avenue ♦ Birmingham, AL 35208 ♦ Telephone 800/366-2642 ♦ Facsimile 205/786-6527
email fmayer@gibraltar1.com



#15 CONTROL JOINT Stainless Steel Grade 304 Expanded Metal VV or M Type Control Joint

FOR STUCCO AND PLASTER INSTALLATIONS

This control joint provides for the basic expansion and contraction that can be expected in the stucco membrane, such as initial shrinkage during stucco curing, and minor thermal expansion and contraction.

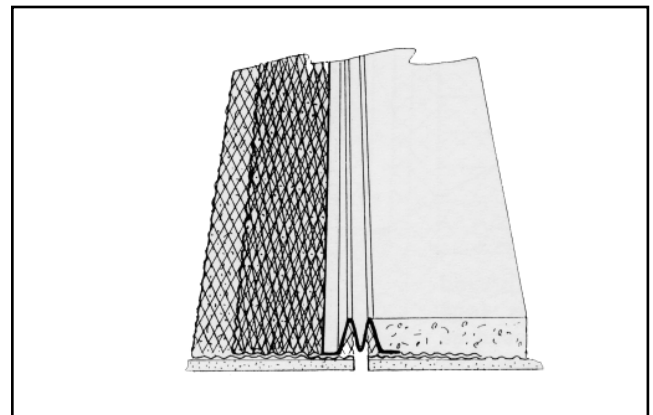
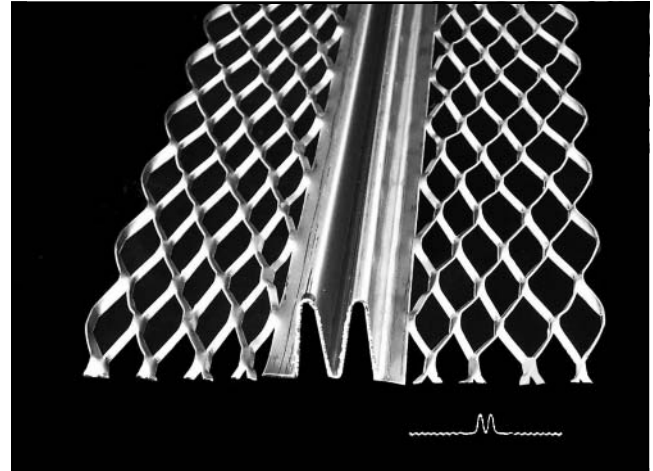
Submitted Product	Product Number	Ground
	#15	3/4"
additional Grounds available upon request		
Standard Package Lengths are 10-ft.		

Control Joints are designed to deal with initial stucco shrinkage and minor thermal movement.

DESCRIPTION

One piece expanded metal Control joints with an overall width of 4-inches. This control joint can be orientated and installed in a wall in both the vertical and horizontal direction.

Stainless steel lath and accessories can be used with various substrates: sheathing, CMU, cast-in-place
Longer life than Galvanized Steel and Zinc Alloy –
Maximum Corrosion Protection



Refer to ASTM C1063 for support spacing, lath selection, fastener selection and further information regarding the proper installation of metal lath.

ASTM and most codes require hot dipped galvanized lath for all exterior applications. Stainless steel lath and accessories provides longer life and more resistance to corrosive environments.

Made in the United States of America

All information contained herein is accurate as known at the time of publication. Specifications may change and AMICO reserves the right to change product specifications without notice and without incurring obligations.

ALABAMA METAL INDUSTRIES CORPORATION

3245 Fayette Avenue ♦ Birmingham, AL 35208 ♦ Telephone 800/366-2642 ♦ Facsimile 205/786-6527
email fmayer@gibraltar1.com

2012

