

### Zinc Alloy Bead Accessories for Stucco and Plaster Installations

Project Submittals as manufactured by  
ALABAMA METAL INDUSTRIES CORPORATION

Submittal Date:

Contract Number:

Project Name:

Section Number:

Contractor's Name:

---

All information contained herein is accurate as known at the time of publication. Specifications may change and AMICO reserves the right to change product specifications without notice and without incurring obligations.

**ALABAMA METAL INDUSTRIES CORPORATION**

3245 Fayette Avenue ♦ Birmingham, AL 35208 ♦ Telephone 800/366-2642 ♦ Facsimile 205/786-6527  
email [fmayer@gibraltar1.com](mailto:fmayer@gibraltar1.com)



## Lathing Accessories

made from zinc alloys meeting ASTM C841 and C1063.

### SCOPE

This submittal covers lathing accessories installed with interior and exterior Portland Cement-Based Plaster. All accessories shall have perforated or expanded flanges to permit complete embedment in the plaster, to provide for accurate alignment, and to secure attachment of the accessory to the underlying surface in receiving the specified thickness of plaster. The selection of the accessory shall be determined by numerous factors not limited to: the project location, climate and environment resulting from excessive salt, moisture, humidity, pollution, wear and temperature changes.

### MATERIALS

Zinc Alloy

### THICKNESS OF BASE MATERIALS

These minimum thicknesses meet ASTM C841 Section 6.7.1.

### FINISH

Zinc Alloy shall be mill finish

### PACKAGING AND PACKAGE MARKING

Generally available in 8-ft and 10-ft long lengths. Longest possible lengths shall always be installed to avoid joints. Each factory box shall be marked with manufacturer's name, and style of lathing accessory.

### CERTIFICATION

When required a certification that products meets the requirements of ASTM C1063 and ASTM C841 shall be provided.

### AMICO LATH AND STUCCO ACCESSORIES MEET THE FOLLOWING SPECIFICATIONS

ASTM B69 Standard Specification for Rolled Zinc

C841 Standard Specification for Installation of Interior Lathing and Furring

ASTM C847 - Standard Specification for Expanded Metal Lath

ASTM C1063 Standard Specification for Installation of Lathing and Furring to Receive Interior and Exterior Portland Cement-Based Plaster

Meets Buy American Procurement Requirements.  
Made in the United States of America

All information contained herein is accurate as known at the time of publication. Specifications may change and AMICO reserves the right to change product specifications without notice and without incurring obligations.

### ALABAMA METAL INDUSTRIES CORPORATION

3245 Fayette Avenue ♦ Birmingham, AL 35208 ♦ Telephone 800/366-2642 ♦ Facsimile 205/786-6527  
email [fmayer@gibraltar1.com](mailto:fmayer@gibraltar1.com)



## X-1 CORNER BEAD Zinc Alloy 3" Expanded Metal Flanges

### FOR STUCCO AND PLASTER INSTALLATIONS

This is the standard metal accessory for providing exterior corner protection from bumping and providing a reliably straight ground for screeding. The 3" expanded mesh wings are easily flexed to adapt to framing irregularities and to match appropriate screed heights.

Submitted Product	Product Number	Product Dimensions
	X-1	3" x 3"
Standard Weight per Lineal Foot XXXXXX		
Standard Package Lengths are 10-ft.		

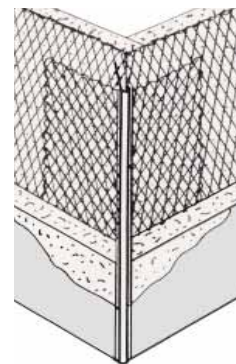
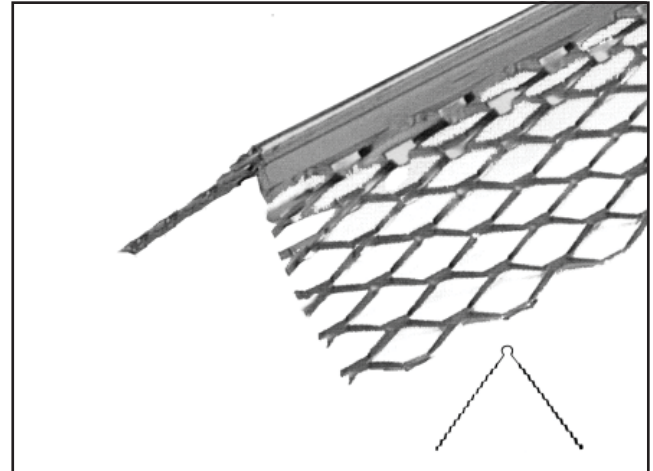
### DESCRIPTION

Corner Bead is an external corner reinforcement accessory made by expanding metal and bent to reinforce portland cement stucco at external corners and to also establish grounds. X-1 Corner Beads for outside corners have a smooth round nose bead with Diamond Mesh wings for the keying of plaster right up to the nose of the bead.

Especially recommended in fireproofing columns and beams. Rigid straight edge nose is easy to install and permits plumb straight outside corners. Excellent protection for corridor corners exposed to traffic. Sections can be joined or spliced together by inserting a finishing nail or a piece of hangar wire.

### Materials

Zinc Alloy



Refer to ASTM C1063 for support spacing, lath selection, fastener selection and further information regarding the proper installation of metal lath.

ASTM and most codes require hot dipped galvanized lath for all exterior applications.

Meets Buy American Procurement Requirements.  
Made in the United States of America

All information contained herein is accurate as known at the time of publication. Specifications may change and AMICO reserves the right to change product specifications without notice and without incurring obligations.

### ALABAMA METAL INDUSTRIES CORPORATION

3245 Fayette Avenue ♦ Birmingham, AL 35208 ♦ Telephone 800/366-2642 ♦ Facsimile 205/786-6527  
email fmayer@gibraltar1.com

2014

### X-1-N NARROW CORNER BEAD Zinc Alloy 2½" Expanded Metal Flanges

#### FOR STUCCO AND PLASTER INSTALLATIONS

This is a narrower version of the standard metal accessory. Provides exterior corner protection from bumping and providing a reliably straight ground for screeding. The 2½" expanded mesh wings are easily flexed to adapt to framing irregularities and to match appropriate screed heights.

Submitted Product	Product Number	Product Dimensions
	X-1-N	2½" x 2½"
Standard Package Lengths are 8-ft and 10-ft.		

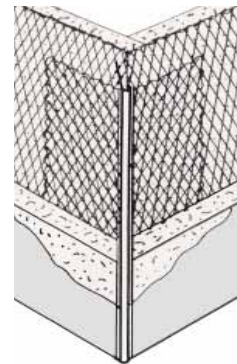
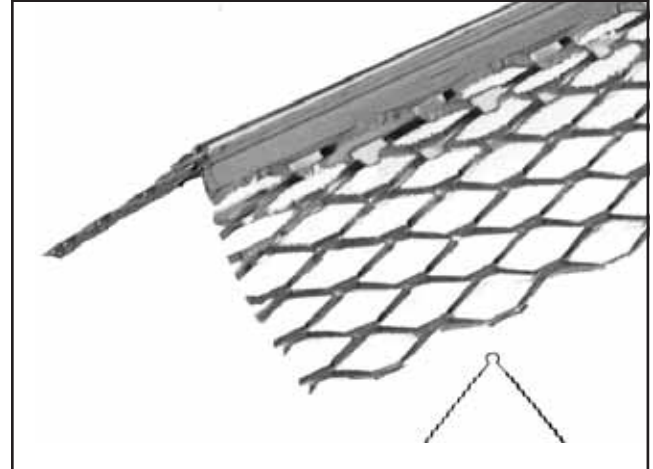
#### DESCRIPTION

X-1-N Corner Bead is an external corner reinforcement accessory made by expanding metal and bent to reinforce portland cement stucco at external corners and to also establish grounds. X-1-N Corner Beads for outside corners have a smooth round nose bead with Diamond Mesh wings for the keying of plaster right up to the nose of the bead.

Especially recommended in fireproofing columns and beams. Rigid straight edge nose is easy to install and permits plumb straight outside corners. Excellent protection for corridor corners exposed to traffic. Sections can be joined or spliced together by inserting a finishing nail or a piece of hangar wire.

#### Materials

Zinc Alloy



Refer to ASTM C1063 for support spacing, lath selection, fastener selection and further information regarding the proper installation of metal lath.

ASTM and most codes require hot dipped galvanized lath for all exterior applications.

Meets Buy American Procurement Requirements.  
Made in the United States of America

All information contained herein is accurate as known at the time of publication. Specifications may change and AMICO reserves the right to change product specifications without notice and without incurring obligations.

#### ALABAMA METAL INDUSTRIES CORPORATION

3245 Fayette Avenue ♦ Birmingham, AL 35208 ♦ Telephone 800/366-2642 ♦ Facsimile 205/786-6527  
email [fmayer@gibraltar1.com](mailto:fmayer@gibraltar1.com)



## X-2 REINFORCED CORNER BEAD Zinc Alloy 3 1/4" Expanded Metal Flanges

FOR STUCCO AND PLASTER INSTALLATIONS.  
This is a heavy reinforced metal corner bead for protecting exposed outside corners in commercial and institutional applications and providing a reliably straight ground for screeding. The 3 1/4" expanded mesh wings are reinforced with stiffener strips for added strength.

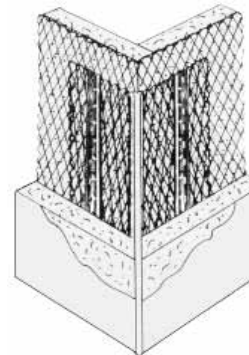
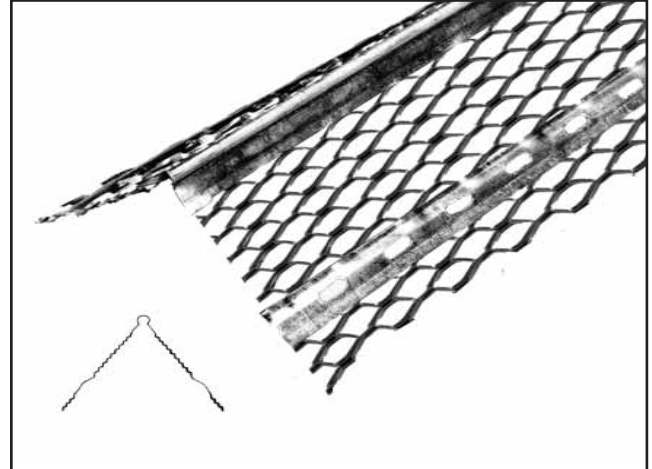
Submitted Product	Product Number	Product Dimensions
	X-2	3 1/4" x 3 1/4"
Standard Package Lengths are 10-ft.		

### DESCRIPTION

X-2 Corner Bead is known for its superior strength an external corner reinforcement accessory made by expanding metal and bent to reinforce portland cement stucco at external corners and to also establish grounds. X-2 Corner Beads for outside corners have a smooth round nose bead with Diamond Mesh wings for the keying of plaster right up to the nose of the bead.

### Materials

Zinc Alloy



Refer to ASTM C1063 for support spacing, lath selection, fastener selection and further information regarding the proper installation of metal lath.

ASTM and most codes require hot dipped galvanized lath for all exterior applications.

Meets Buy American Procurement Requirements.  
Made in the United States of America

All information contained herein is accurate as known at the time of publication. Specifications may change and AMICO reserves the right to change product specifications without notice and without incurring obligations.

### ALABAMA METAL INDUSTRIES CORPORATION

3245 Fayette Avenue ♦ Birmingham, AL 35208 ♦ Telephone 800/366-2642 ♦ Facsimile 205/786-6527  
email [fmayer@gibraltar1.com](mailto:fmayer@gibraltar1.com)



## X-66 CASING BEAD Zinc Alloy Expanded Metal Plaster Stop

### FOR STUCCO AND PLASTER INSTALLATIONS

Casing Bead is used to terminate plaster or stucco around doors, windows and any other through wall penetration. Select the proper ground to aid in screeding the proper thickness of stucco.

Product Submittal	Product Number	Ground
	X-66	3/8"
	X-66	1/2"
	X-66	5/8"
	X-66	3/4"
	X-66	7/8"
	X-66	1"
	X-66	1 1/4"
	X-66	1 1/2"
Standard Package Length is 10-ft.		

### TOLERANCES

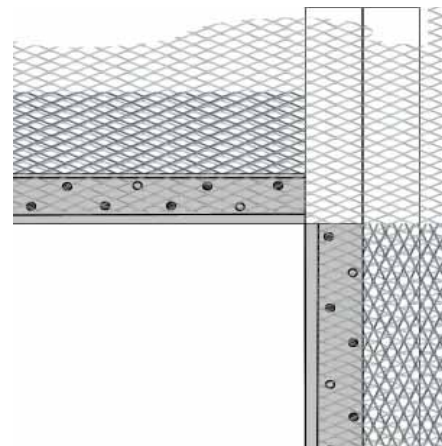
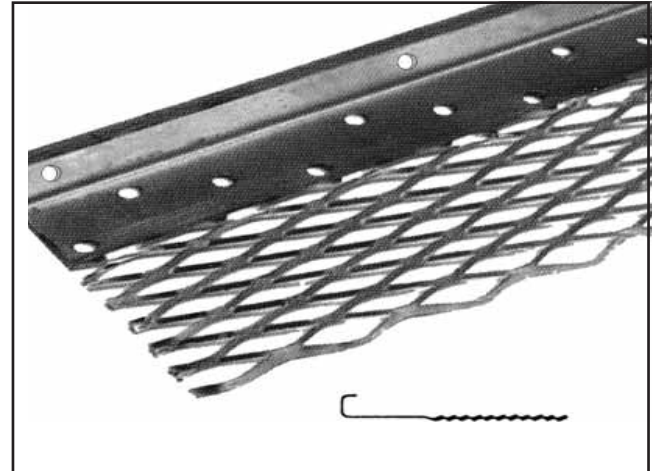
ASTM C1063, Table 1 defines the minimum allowable thickness of lathing accessories

### Materials

Zinc Alloy

### DESCRIPTION

One piece casing bead with a 3-inch wide expanded metal mesh flange. Pre-drilled for proper attachment to wood and metal framing members.



Refer to ASTM C1063 for support spacing, lath selection, fastener selection and further information regarding the proper installation of metal lath.

ASTM and most codes require hot dipped galvanized lath for all exterior applications.

Meets Buy American Procurement Requirements.  
Made in the United States of America

All information contained herein is accurate as known at the time of publication. Specifications may change and AMICO reserves the right to change product specifications without notice and without incurring obligations.

### ALABAMA METAL INDUSTRIES CORPORATION

3245 Fayette Avenue ♦ Birmingham, AL 35208 ♦ Telephone 800/366-2642 ♦ Facsimile 205/786-6527  
email [fmayer@gibraltar1.com](mailto:fmayer@gibraltar1.com)



## N-66 CASING BEAD

### Zinc Alloy Narrow Wing Casing Bead

FOR STUCCO AND PLASTER INSTALLATIONS  
Primarily a West Coast product.

N-66 Casing Bead is used to terminate plaster or stucco around doors, windows and any other through wall penetration. Select the proper ground to aid in screeding the proper thickness of stucco.

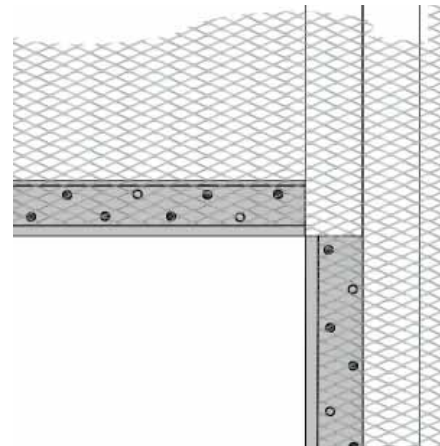
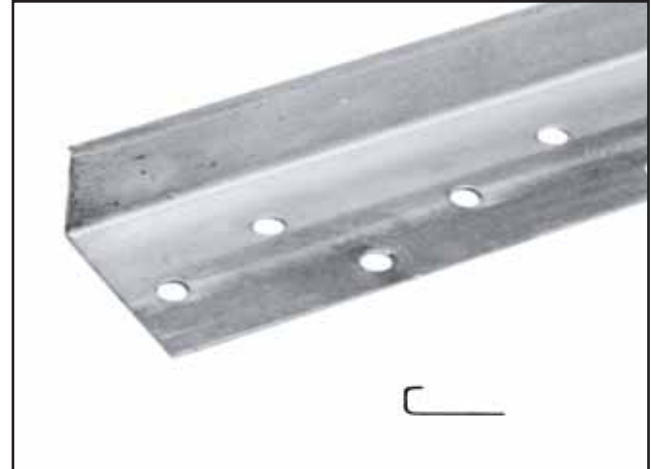
Submitted Product	Product Number	Ground
	N-66	3/8"
	N-66	1/2"
	N-66	3/4"
	N-66	7/8"
	N-66	1"
Standard Package Lengths are 10-ft.		
N-66 Casing Bead is produced only in Fontana, CA		

#### DESCRIPTION

One piece solid metal construction without the expanded metal flange. Nail and keying holes are provided in the flange. The flange width is approximately 1 3/8" wide. casing bead with a 3-inch wide expanded metal mesh flange. Pre-drilled for proper attachment to wood and metal framing members. Weep holes are optional on all ground sizes.

#### Materials

Zinc Alloy



Refer to ASTM C1063 for support spacing, lath selection, fastener selection and further information regarding the proper installation of metal lath.

ASTM and most codes require hot dipped galvanized lath for all exterior applications.

Meets Buy American Procurement Requirements.  
Made in the United States of America

All information contained herein is accurate as known at the time of publication. Specifications may change and AMICO reserves the right to change product specifications without notice and without incurring obligations.

#### ALABAMA METAL INDUSTRIES CORPORATION

3245 Fayette Avenue ♦ Birmingham, AL 35208 ♦ Telephone 800/366-2642 ♦ Facsimile 205/786-6527  
email fmayer@gibraltar1.com



## #15 EXPANSION JOINT Zinc Alloy Expanded Metal VV or M Type Expansion Joint

FOR STUCCO AND PLASTER INSTALLATIONS  
These expansion joints provide for the basic expansion and contraction that can be expected in the stucco membrane, such as initial shrinkage during stucco curing, and minor thermal expansion and contraction.

Submitted Product	Product Number	Ground
	#15	3/8"
	#15	1/2"
	#15	5/8"
	#15	3/4"
	#15	7/8"
Standard Package Lengths are 10-ft.		

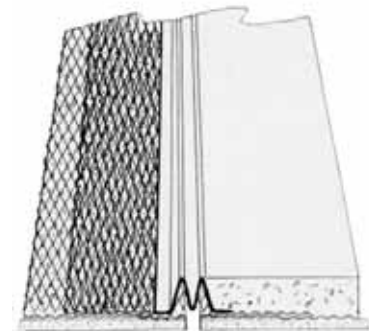
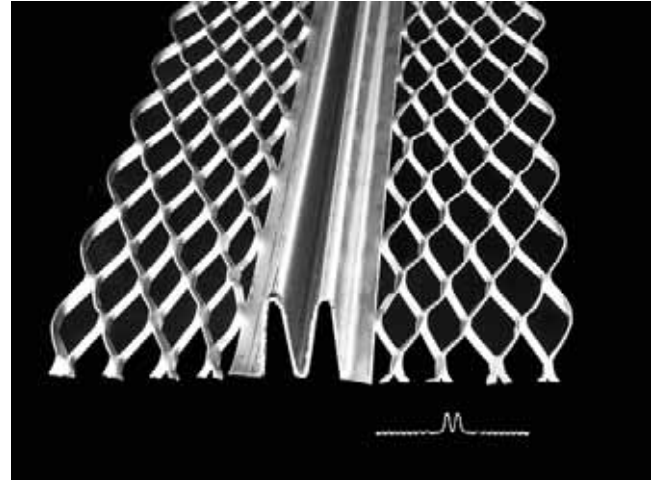
Expansion Joints are designed to deal with structural movement within a structure.

### DESCRIPTION

One piece expanded metal expansion joints with an overall width of 4-inches. This expansion joint can be orientated and installed in a wall in both the vertical and horizontal direction. Two and Three piece joints require extra caulking at the juncture of the pieces to avoid moisture problems. This one piece design eliminates the leaking issue.

### Materials

Zinc Alloy



Refer to ASTM C1063 for support spacing, lath selection, fastener selection and further information regarding the proper installation of metal lath.

ASTM and most codes require hot dipped galvanized lath for all exterior applications.

Meets Buy American Procurement Requirements.  
Made in the United States of America

All information contained herein is accurate as known at the time of publication. Specifications may change and AMICO reserves the right to change product specifications without notice and without incurring obligations.

### ALABAMA METAL INDUSTRIES CORPORATION

3245 Fayette Avenue ♦ Birmingham, AL 35208 ♦ Telephone 800/366-2642 ♦ Facsimile 205/786-6527  
email [fmayer@gibraltar1.com](mailto:fmayer@gibraltar1.com)





## #30 INSIDE CORNER EXPANSION JOINT Zinc Alloy Expanded Metal Construction

FOR STUCCO AND PLASTER INSTALLATIONS  
This expansion joint is similar in construction to the M-Type joint but is bent to an angle to form inside corners allowing for lateral movement.

Submitted Product	Product Number	Ground
	#30	1/2"
	#30	3/4"
	#30	7/8"
Standard Package Lengths are 10-ft.		

Expansion Joints are designed to deal with structural movement within a structure.

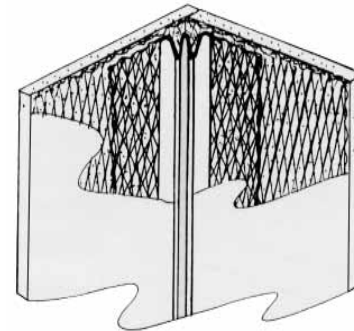
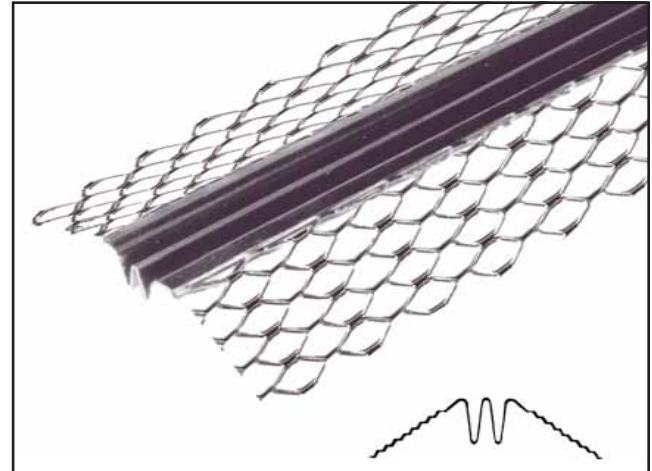
### DESCRIPTION

One piece inside corner expanded metal expansion joints with an overall dimension of 4-inches. This expansion joint is primarily used in exterior stucco applications.

This joint can be orientated and installed in a wall in both the vertical and horizontal direction. Two and Three piece joints require extra caulking at the juncture of the pieces to avoid moisture problems. This one piece design eliminates the leaking issue.

### Materials

Zinc Alloy



Refer to ASTM C1063 for support spacing, lath selection, fastener selection and further information regarding the proper installation of metal lath.

ASTM and most codes require hot dipped galvanized lath for all exterior applications.

Meets Buy American Procurement Requirements.  
Made in the United States of America

All information contained herein is accurate as known at the time of publication. Specifications may change and AMICO reserves the right to change product specifications without notice and without incurring obligations.

### ALABAMA METAL INDUSTRIES CORPORATION

3245 Fayette Avenue ♦ Birmingham, AL 35208 ♦ Telephone 800/366-2642 ♦ Facsimile 205/786-6527  
email [fmayer@gibraltar1.com](mailto:fmayer@gibraltar1.com)



## XJ-15 GRIPLOCK J EXPANSION JOINT Zinc Alloy Expanded Metal Construction

### FOR STUCCO AND PLASTER INSTALLATIONS

The locking affect of the "J" design helps reduce the separation of stucco at the edge of the joint when stucco is forced under the "J" flange.

This expansion joint is similar in construction to the M Type joint.

Submitted Product	Product Number	Ground
	XJ-15	1/2"
	XJ-15	3/4"
	XJ-15	7/8"
Standard Package Lengths are 10-ft.		

Expansion Joints are designed to deal with structural movement within a structure.

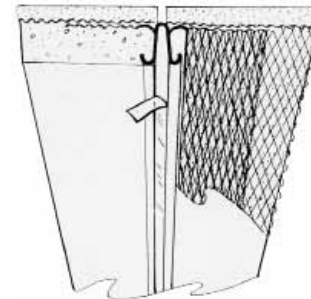
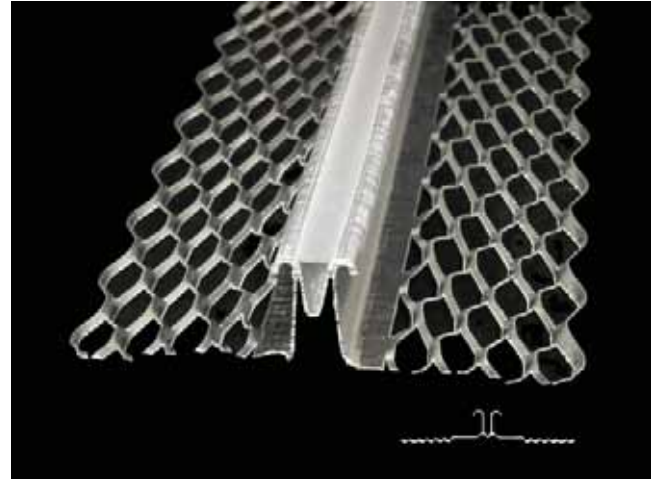
### DESCRIPTION

One piece inside corner expanded metal expansion joints with an overall dimension of 4-inches. This expansion joint is primarily used in exterior stucco applications.

This joint can be orientated and installed in a wall in both the vertical and horizontal direction. Two and Three piece joints require extra calking at the juncture of the pieces to avoid moisture problems. This one piece design eliminates the leaking issue.

### Materials

Zinc Alloy



Refer to ASTM C1063 for support spacing, lath selection, fastener selection and further information regarding the proper installation of metal lath.

ASTM and most codes require hot dipped galvanized lath for all exterior applications.

Meets Buy American Procurement Requirements.  
Made in the United States of America

All information contained herein is accurate as known at the time of publication. Specifications may change and AMICO reserves the right to change product specifications without notice and without incurring obligations.

### ALABAMA METAL INDUSTRIES CORPORATION

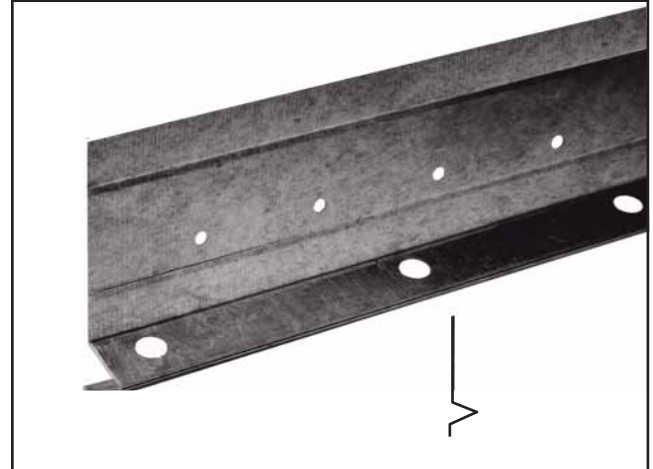
3245 Fayette Avenue ♦ Birmingham, AL 35208 ♦ Telephone 800/366-2642 ♦ Facsimile 205/786-6527  
email [fmayer@gibraltar1.com](mailto:fmayer@gibraltar1.com)



## FOUNDATION WEEP SCREED Solid Zinc Alloy Construction

FOR STUCCO AND PLASTER INSTALLATIONS

The 3½” nailing flange serves as a flashing when water resistant breathable building paper or paper backed lath is installed over the flange. The holes in the “V” stop act primarily as a keying mechanisms and also offer minor moisture weeping capabilities. As stucco cures it will shrink slightly away from the “V” stop allowing moisture to flow down the building paper and exit down the sloped surface.



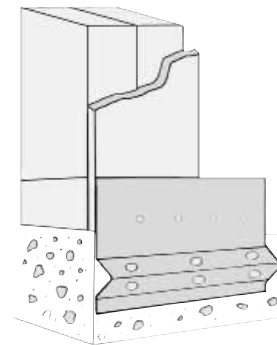
Submitted Product	Product Number	Ground
	FHA #7	7/8”
Standard Package Lengths are 10-ft.		

### DESCRIPTION

This standard FHA approved screed is required at the base of walls as part of a drainage system for exterior stucco or manufactured stone applications.

### Materials

Zinc Alloy



Refer to ASTM C1063 for support spacing, lath selection, fastener selection and further information regarding the proper installation of metal lath.

ASTM and most codes require hot dipped galvanized lath for all exterior applications.

Meets Buy American Procurement Requirements.  
Made in the United States of America

All information contained herein is accurate as known at the time of publication. Specifications may change and AMICO reserves the right to change product specifications without notice and without incurring obligations.

### ALABAMA METAL INDUSTRIES CORPORATION

3245 Fayette Avenue ♦ Birmingham, AL 35208 ♦ Telephone 800/366-2642 ♦ Facsimile 205/786-6527  
email [fmayer@gibraltar1.com](mailto:fmayer@gibraltar1.com)



## CONTROL JOINT Solid Zinc Alloy Construction

FOR STUCCO AND PLASTER INSTALLATIONS

This 1-piece, solid zinc control joint allows for the less extreme thermal movement and normal shrinkage in cement plaster. Supplied with factory applied tape to ensure a clean joint.

Submitted Product	Product Number	Ground
	CJ380	3/8"
	CJ500	1/2"
	CJ750	3/4"
	CJ1000	1"
Standard Package Lengths are 10-ft.		

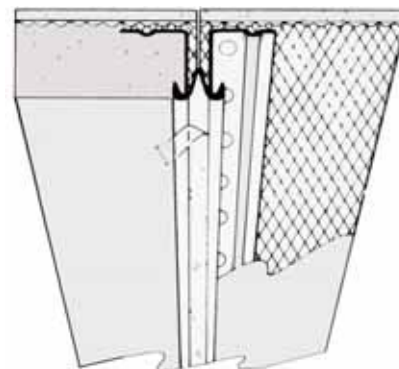
Control Joints are typically flexible one-piece components designed to control the less extreme thermal and normal shrinkage in cement plaster.

### DESCRIPTION

A solid flange control joint with large holes in the flange to aid in the attachment of adjoining metal lath. The design of the shoulder for the stucco embedment and increases the holding capacity at the joint to minimize cracking. Shipped from the factory with tape over the expansion space to ensure a clean joint.

### Materials

Zinc Alloy



Refer to ASTM C1063 for support spacing, lath selection, fastener selection and further information regarding the proper installation of metal lath.

ASTM and most codes require hot dipped galvanized lath for all exterior applications.

Meets Buy American Procurement Requirements.  
Made in the United States of America

All information contained herein is accurate as known at the time of publication. Specifications may change and AMICO reserves the right to change product specifications without notice and without incurring obligations.

### ALABAMA METAL INDUSTRIES CORPORATION

3245 Fayette Avenue ♦ Birmingham, AL 35208 ♦ Telephone 800/366-2642 ♦ Facsimile 205/786-6527  
email [fmayer@gibraltar1.com](mailto:fmayer@gibraltar1.com)

2014

